



# AELDRE

Tourable multidisciplinary site-creative work in a big tree.  
Circus, music and dance meet to pay tribute to one of nature's great wonders.





Photo credits and location

page 1 Dmitri Kotjuh - Pähni, Estonia  
page 2 Jannica Honey - Lund, Sweden  
page 4 Dmitri Kotjuh - Pähni, Estonia

# Table of contents

Concept

Artists of Aeldre

Technical Rider

ENT activities of 2022

More info:

[www.entmanagement.se/aeldre](http://www.entmanagement.se/aeldre)

Video documentation:

[www.entmanagement.se/aeldre-video](http://www.entmanagement.se/aeldre-video)

The production of Aeldre was supported by:

Arts Council Norway

Swedish Arts Council

The Region of Skåne

The Swedish Arts Grants Committee

Music Norway

Export Music Sweden

Aasentunet

Sansusī

Aigu Om!





## Concept and approach

Aeldre is a multidisciplinary site-creative work where circus, music and dance meet to pay tribute to one of nature's great wonders – Trees.

From the roots through the trunk up to the treetops, Aeldre takes the audience on a journey that affirms life and its many colorful seasons. The elm, the beech and the great oak, are just some of the stages that make up the performance. Embodying the stories that have been waiting to be told by the trees and all those who have shared these places – past, present and future.

Aeldre is played for all ages and highlights elements that touch all those who have ever felt bark under their fingers, danced among leaves under bare branches or watched their tree grow over time.

The performance was created during 2022 in a serie of residences and public performances in different trees in Northern Europe. The goal with this approach was to learn how to adapt the performance for different trees and for different types of audiences. The process was rooted in the specialities of the performers and each one held workshops and shared the leadership during rehearsals. Different perspectives have been in focus during different residencies and the performance is a result of the different tastes, choices and priorities of the artists and connected to their artistic background.

So far we have worked in: Chestnut, Beech, Willow, Maple, Oak, Blood-beech and Linden.

We hope to get to know more types of trees all over the world.

# The Artists and Creators

The show is a collaboration and co-creation of the artists.

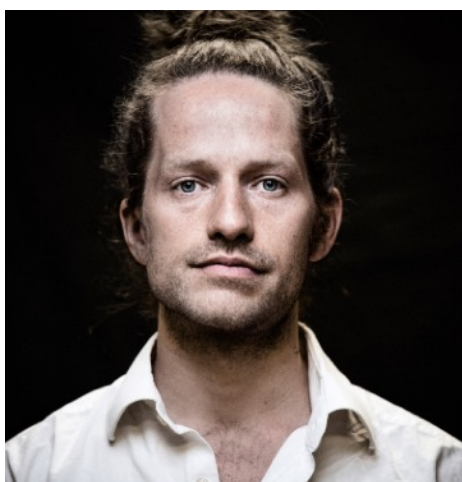
Besides the artists we have had one outside eye: Francesca Hyde

and one associated researcher, specialized in outside performances: Sara Erlingsdotter



**Mira Leonard** Swedish circus artist, aerial acrobat. Educated with a BA in circus from the University of Dance and Circus in Stockholm (SKH), has worked internationally as an aerial acrobat since 2009, with companies such as Cirkus Cirkör (SE), Cirk La Putyka (CZ) and Un Loup Pour L'homme (FR). Specialized in duo trapeze, hand to hand and icarian games.

**Daniel Jeremiah Persson** Scanian dancer and choreographer trained from London Contemporary Dance School. Particularly interested in Release-based, GAGA, Floorwork and physical theater as well as contact improvisation and somatically based techniques (Alexander, Feldenkrais). Has worked internationally as a dancer since 2014, with choreographers such as Esmeralda Ahlqvist, Khamlane Halsackda, Graham Adey, Martin Forsberg. Has choreographed: Q21, 100% (work-in-progress), S'ala Sassari, When the Curtain's Up, pt1., Dans Safari (Nya Rörelsen)



**Love Aamås Kjellsson** Scanian Traditional musician and composer. Specialized in singing, fiddle, synthesizers and effects. Having played electrical guitar and drum machines in indie-pop/rock groups as well as carrying on the traditional music of Scania Love has broad range of musical references and skills. A multidisciplinary master degree from University of Arts in Stockholm, specialized in artistic self reflection has deepened his understanding of creative processes and communication through art.



**Karoline Aamås** Norwegian circus artist, aerial acrobat. Educated with a BA in circus from the university of Dance and Circus in Stockholm, in Performing Arts and Landscape – Stockholm Dramatic University, and in circus and performing arts from AFUK in Copenhagen. Has worked internationally as an aerial acrobat since 2011, with companies such as Cirkus Cirkör (SE), Cirkus Xanti (NO), Frikar (NO), Cirko Aero (FI), Tanter (DK), Långsjö Teater (SE), Lotte Mueller (DE) . Specialized in vertical rope and hair-suspension.



**Ester Thunander** Scanian traditional and improvisational musician.

Plays violin, vocal and flute. She is educated in the folk music department at the Norwegian Academy of Music in Oslo with exchanges at the Royal Academy of Music in Stockholm and the University College of Southeast Norway in Rauland. Her main genre is folk music but she moves in different musical landscapes of folk music, new composition, baroque and free improvisation.

# Technical Rider

Aeldre is rigged in a tree. We bring all rigging equipment.

Aeldre needs a sound system and a sound technician.

Aeldre can be played in daylight without light technic or in evening/night with light technic.

Set up times: 2 full days before show day, to rig and rehearse the show in the specific tree.

Sound technic can be rigged on the morning of the show. Sound check on the day of the show.

Light can preferably be rigged on the evening before the show or during daytime before the show.

We do not offer a light design at the moment.

The light technician can set up a general lighting of the tree and an led-strip marking boundary between stage and audience.

If possible we can make a more advanced light-plan with the local light technician.

Below are examples of trees we have performed in.

Below that is technical rider for sound.

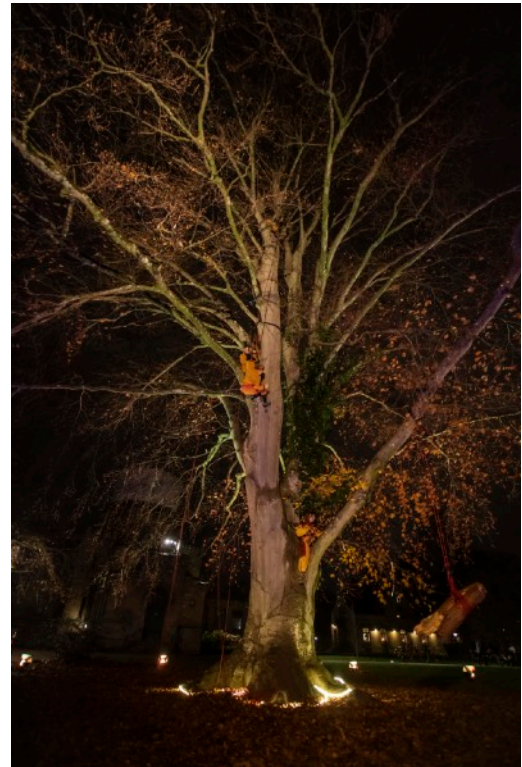


# Aeldre tree examples

The show can be played in most types of bigger trees without needles or thorns. Important for the audience to be able to see, so the tree needs at least one direction where it is more "open".



Oak



Beech



Willow



Linden



# Rider Sound

We need a PA suitable for the size of the planned audience. The sound can either be set up with several speakers around the audience (for a circular audience) or with a frontal set up with two speakers.

We play both from the tree using in ear monitors and wireless instruments and from the ground.

We need one monitor, two microphone stands with boom arms and 3 DI boxes.

We bring all instruments and microphones.

We use cheap violins in the tree, so please use a lot of EQ and effects to help them sound better.

## Channel list

		<b>Instrument</b>	<b>Tech description</b>
1	XLR	Voice Ester	Wireless Microphone Shure BLX24/SM58BK S8
2	XLR	Voice Love	Wireless Microphone Sennheiser XSW 2-865-E
3	Jack	Voice with effects	Shure Beta58 with Roland VT-4, wireless Sennheiser XSW-D
4	XLR	Violin Ester	Wireless transmitter Shure BLX
5	XLR	Violin Love	Wireless transmitter Shure BLX
6	Jack	Drum machine	Volca kick - DI box needed (left channel)
7	Jack	Drum machine	Volca kick - DI box needed (right channel)

## List of wireless transmitters/receivers and frequency ranges

	<b>Frequency</b>	<b>Instrument</b>
1	823 - 832 MHz	Microphone: Shure BLX24/SM58BK S8n
2	821 - 832 or 863 - 865 MHz	Microphone: Sennheiser XSW 2-865-E
3	823-832Mhz	Violin: Shure BLX1 transmitter & Shure BLX4 receiver
4	823-832Mhz	Violin: Shure BLX1 transmitter & Shure BLX4 receiver
5	2,4 GHz	Sennheiser XSW-D
6	2,4 Ghz	In ear monitor: XVive U4